



US 20180141607A1

(19) **United States**

(12) **Patent Application Publication**
Pestritto

(10) **Pub. No.: US 2018/0141607 A1**

(43) **Pub. Date: May 24, 2018**

(54) **MOTORCYCLE WITH REAR CONTROLS**

Publication Classification

(71) Applicant: **Michael Pestritto**, Pompano Beach, FL (US)

(72) Inventor: **Michael Pestritto**, Pompano Beach, FL (US)

(21) Appl. No.: **15/874,382**

(22) Filed: **Jan. 18, 2018**

(51) **Int. Cl.**
B62J 11/00 (2006.01)
G10D 13/00 (2006.01)
B62K 21/18 (2006.01)
B62K 21/12 (2006.01)
B62K 19/40 (2006.01)
B62K 5/027 (2013.01)
B62D 49/06 (2006.01)
B62D 1/22 (2006.01)

(52) **U.S. Cl.**
 CPC *B62J 11/00* (2013.01); *G10D 13/00* (2013.01); *B62K 21/18* (2013.01); *B62D 1/22* (2013.01); *B62K 19/40* (2013.01); *B62K 5/027* (2013.01); *B62D 49/0692* (2013.01); *B62K 21/12* (2013.01)

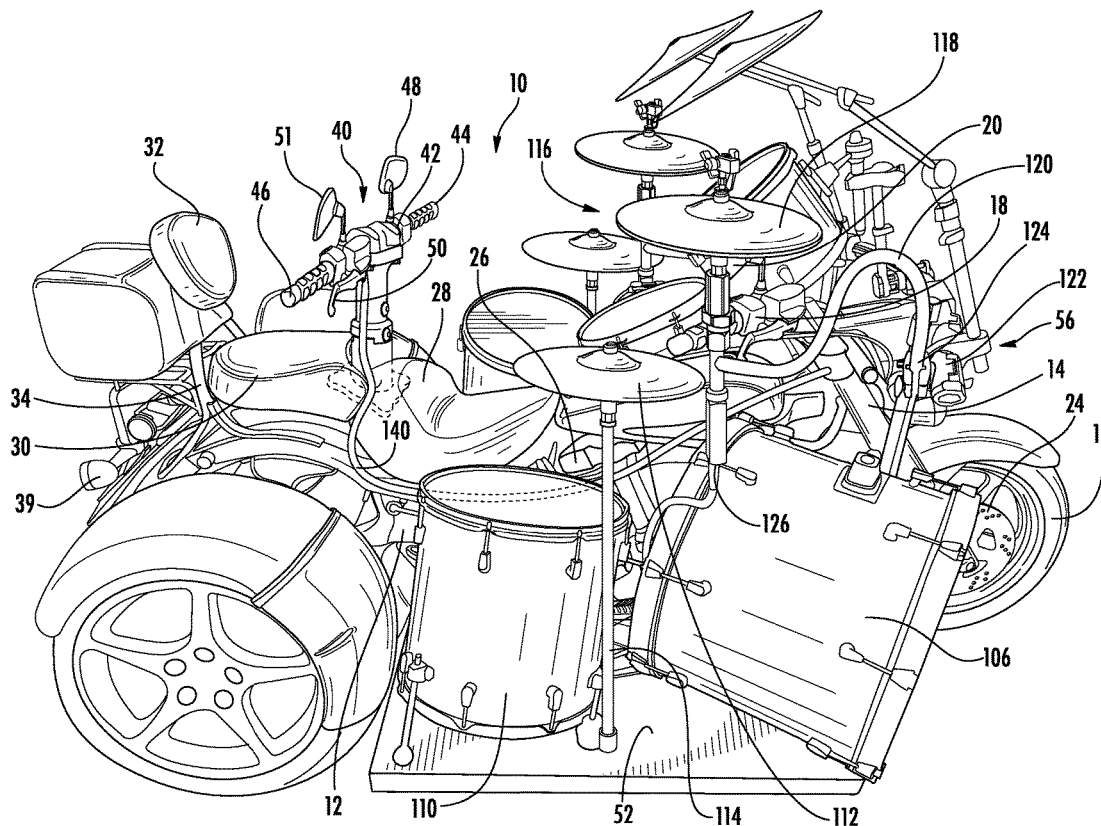
Related U.S. Application Data

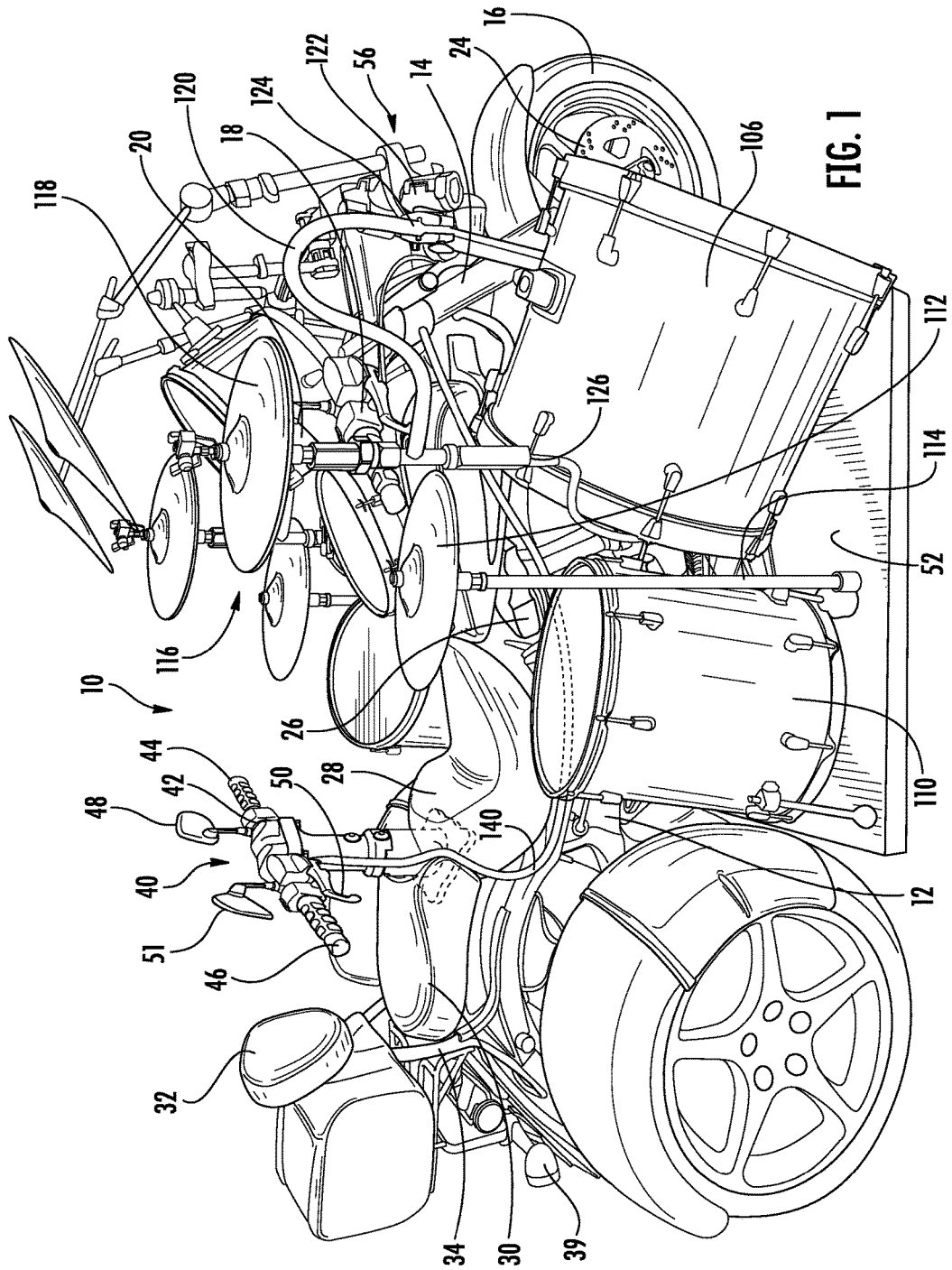
(63) Continuation of application No. 15/238,418, filed on Aug. 16, 2016, now Pat. No. 9,908,578.

(60) Provisional application No. 62/205,850, filed on Aug. 17, 2015.

(57) **ABSTRACT**

A motorcycle having rear-steering controls, including a rear handle bar for steering, for allowing a rear rider to control the motorcycle from a rearward position.





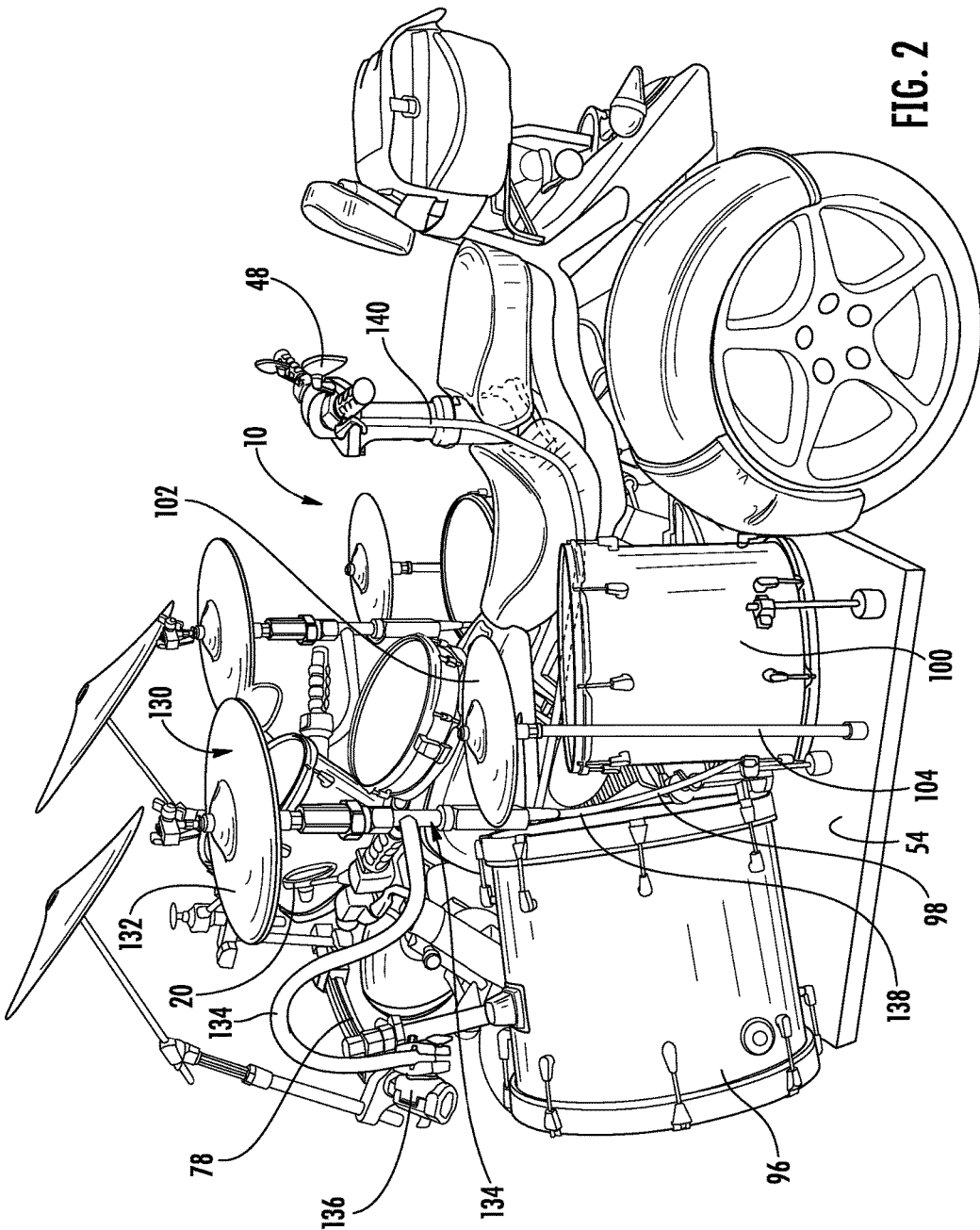


FIG. 2

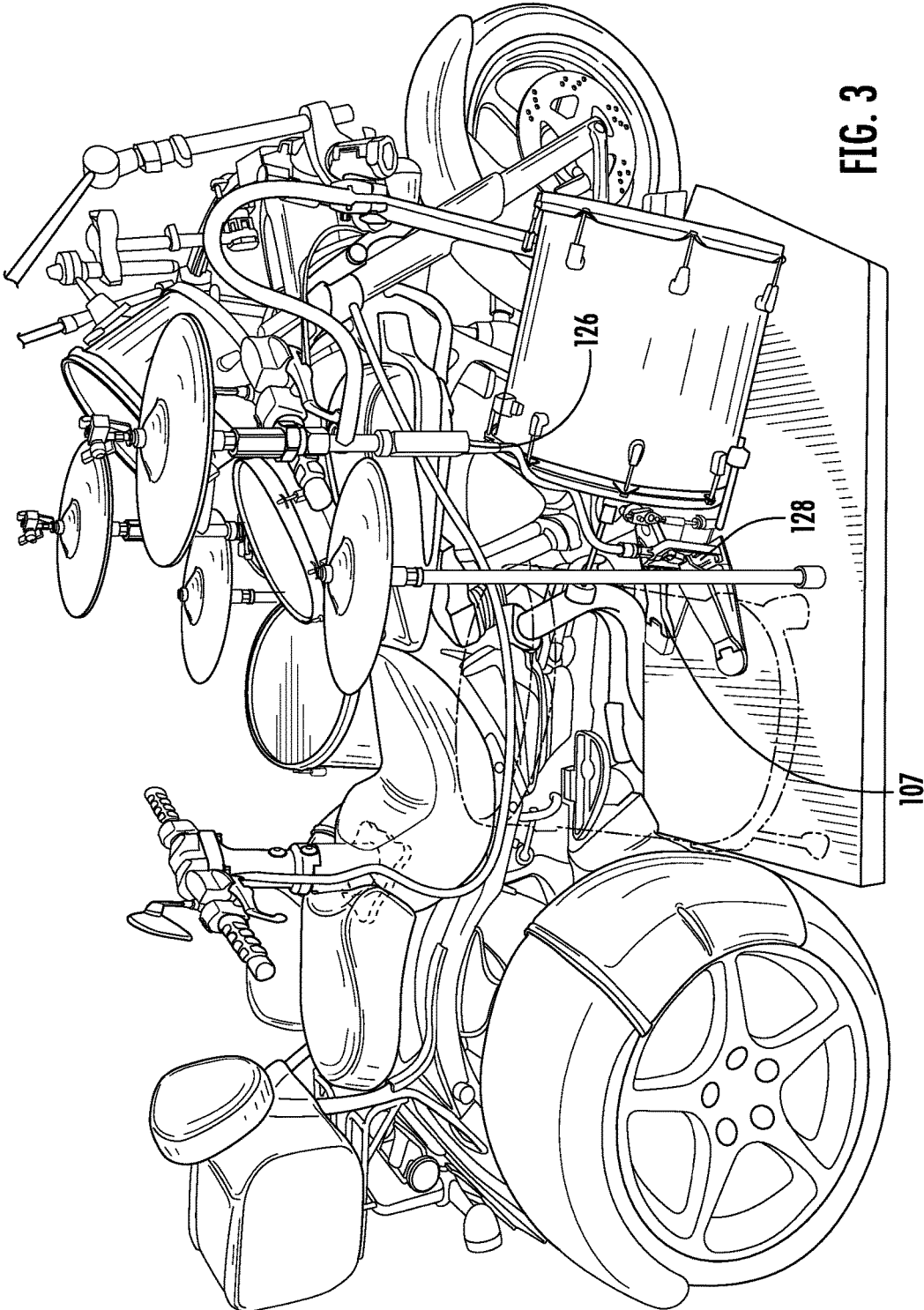
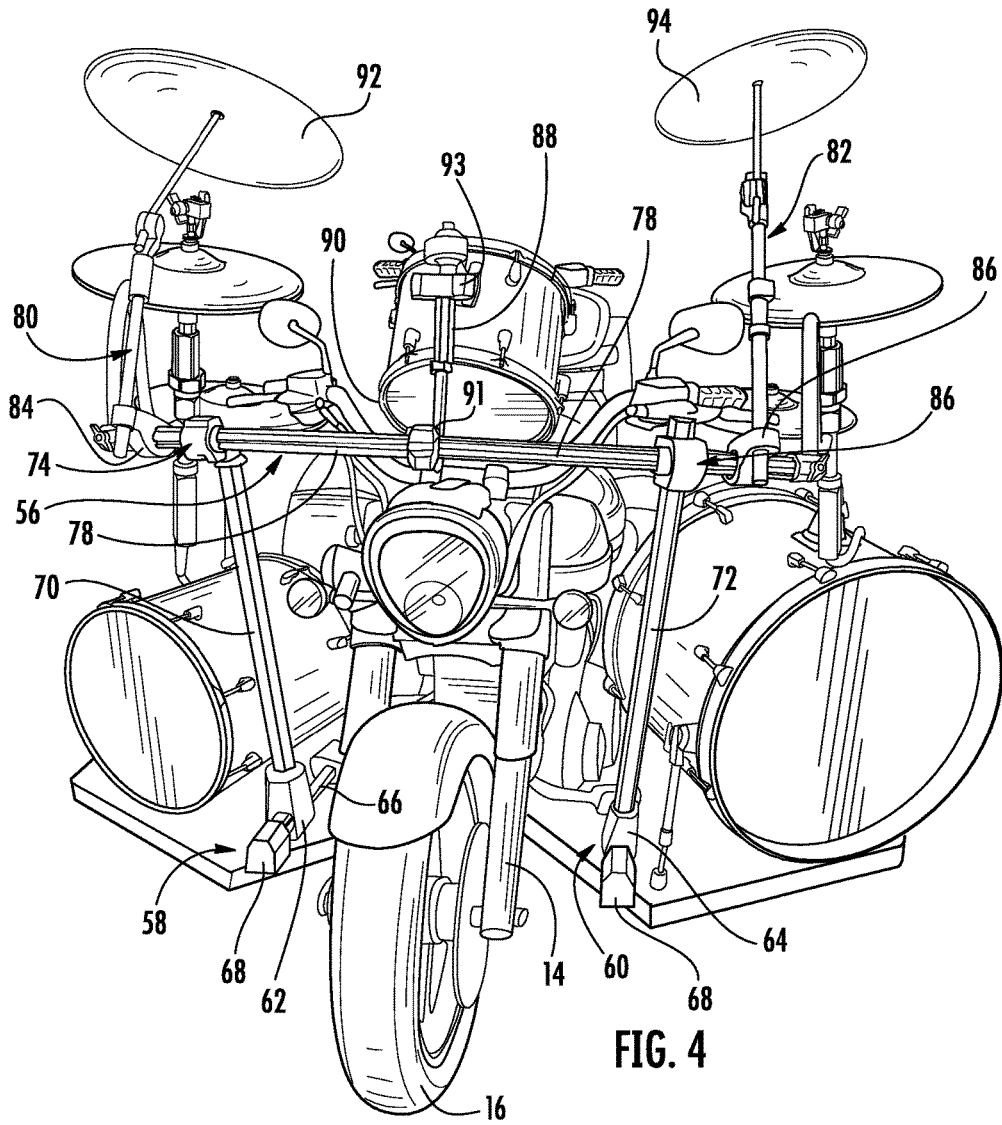


FIG. 3



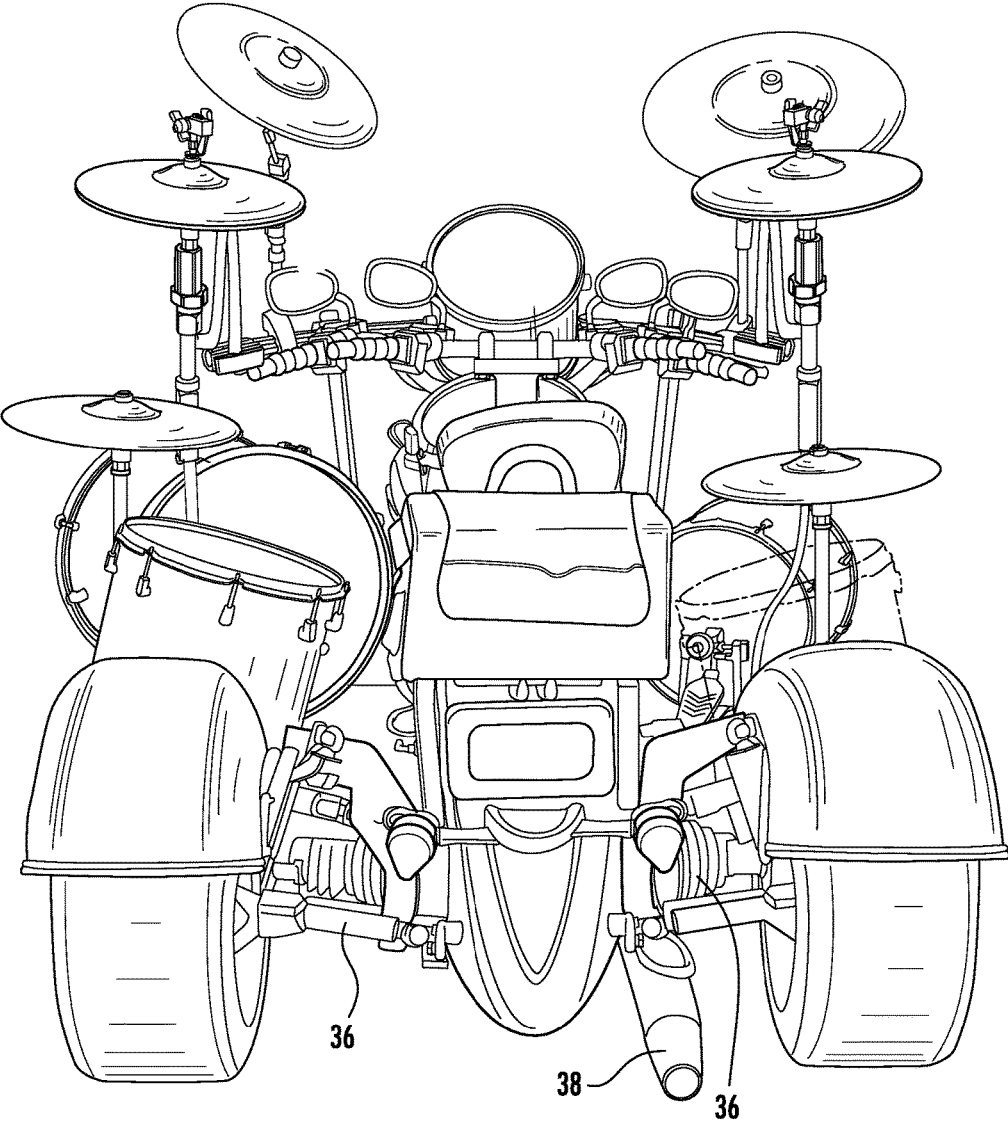


FIG. 5

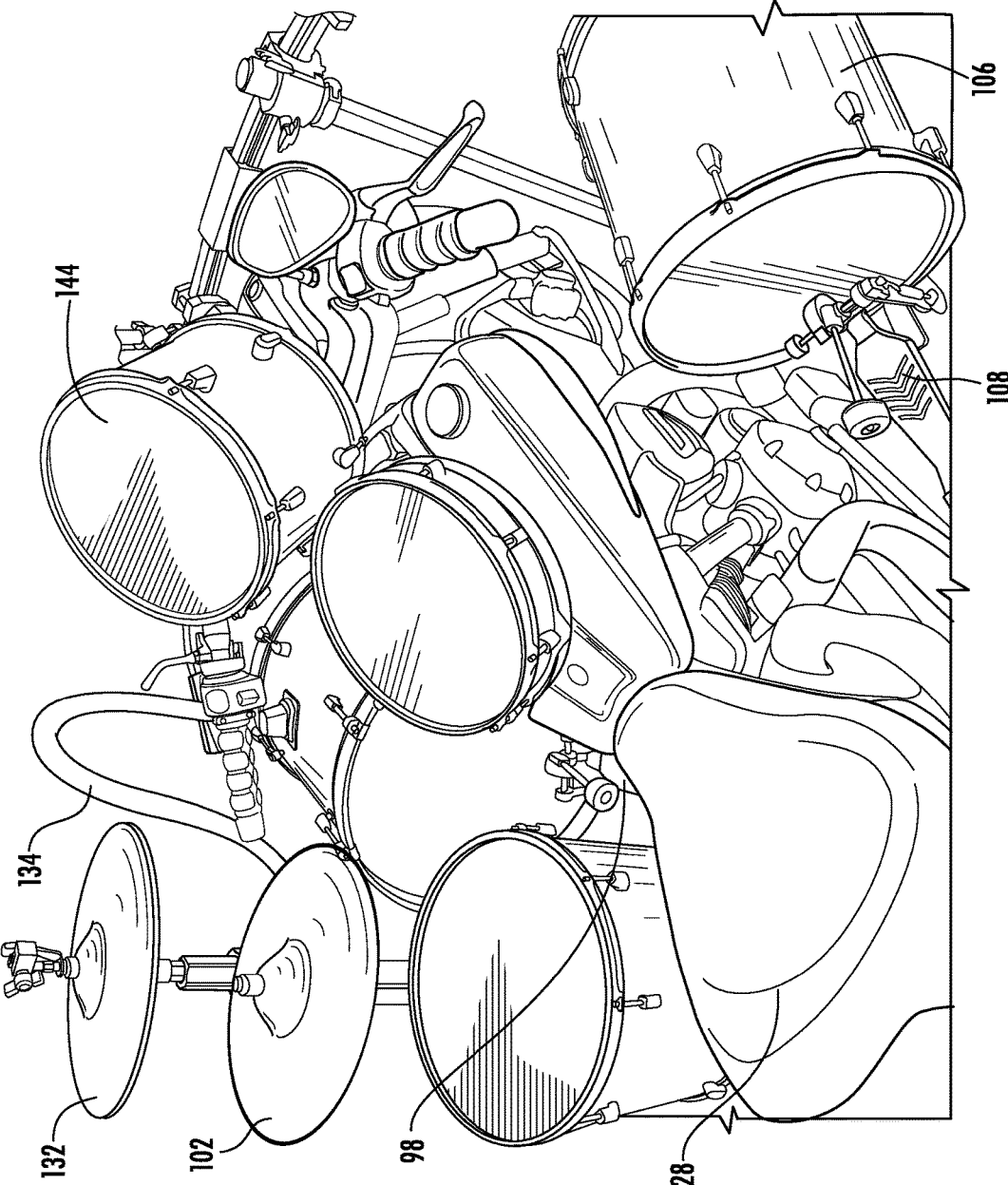


FIG. 6

MOTORCYCLE WITH REAR CONTROLS

CROSS-REFERENCE TO RELATED APPLICATION

[0001] This application is a continuation of and claims benefit to U.S. application Ser. No. 15/238,418, filed Aug. 16, 2016, which claims the benefit to U.S. Provisional Patent Application Ser. No. 62/205,850, filed Aug. 17, 2015, entitled "TRIKE WITH DRUM SET," both of which are hereby incorporated herein by reference in their entirety for all purposes.

FIELD OF THE INVENTION

[0002] The present invention relates to motorcycle, and more particularly to a motorcycle with rear motorcycle controls.

BACKGROUND OF THE INVENTION

[0003] Motorcycles have been used for a long period of time. Due to the fact that the steering is configured for the front most driver, it was not previously possible to integrate other activities with the motorcycle. Typically, such motorcycles are built as a two wheeled motorcycle or three wheeled motorcycle tricycle.

[0004] While a select few innovations for a motorcycle with a drum set generally exists, those prior art innovations differ from the present invention. For example, prior art motorcycles appear to integrate a drum set as a side car. Thus, no known prior art includes a two wheeled motorcycle and/or a three wheeled motorcycle tricycle with a centrally integrated drum set.

[0005] The uncovered prior art is side heavy due to the placement of the drum set as a sidecar, which reduces the drivability of the existing motorcycles and prevents consistent turning.

[0006] There is a need in the art for a motorcycle tricycle that includes an integrated drum set and allows for the drummer to be positioned central about the motorcycle tricycle.

SUMMARY OF THE INVENTION

[0007] The present invention advantageously provides a motorcycle with integrated rear controls.

[0008] According to an embodiment of the present invention, a principal object is to provide two or three wheeled motorcycle ("motorcycle") with an rear controls.

[0009] According to an embodiment of the present invention, another object is to provide a drum set that is mirrored on both sides of the motorcycle.

[0010] According to an embodiment of the present invention, another object is to provide a motorcycle with a rear steering mechanism. Also, the rear steering allows for a person to play the drum set during operation of the motorcycle.

[0011] Other objects will become evident as the present invention is described in detail below.

BRIEF DESCRIPTION OF THE DRAWINGS

[0012] Embodiments of the present application are described herein in which similar elements are given similar reference characters, and a more complete understanding of the present invention, and the attendant advantages and

features thereof, will be more readily understood by reference to the following detailed description when considered in conjunction with the accompanying drawings wherein: [0013] FIG. 1 is a right side perspective view of one embodiment of the motorcycle tricycle with an integrated drum set in accordance with the principles of the present invention;

[0014] FIG. 2 is a left side perspective view of the motorcycle tricycle with an integrated drum set in accordance with the principles of the present embodiment;

[0015] FIG. 3 is a right side perspective view of the motorcycle tricycle with a view through one floor tom in accordance with the principles of the present embodiment;

[0016] FIG. 4 is a front perspective view of the motorcycle tricycle with an integrated drum set in accordance with the principles of the present embodiment;

[0017] FIG. 5 is a rear perspective view of the motorcycle tricycle with an integrated drum set in accordance with the principles of the present embodiment; and

[0018] FIG. 6 is a partial perspective view of a front seat of the motorcycle tricycle with a partial view of the integrated drum set in accordance with the principles of the present embodiment.

DETAILED DESCRIPTION OF THE INVENTION

[0019] The present invention advantageously provides a motorcycle having at least two wheels with integrated rear motorcycle controls. The present invention contemplates various types of motorcycles with at least two centrally mounted seats with rear motorcycle controls.

[0020] Accordingly, the present invention components have been represented where appropriate by conventional symbols in the drawings, showing only those specific details that are pertinent to understanding the embodiments of the present invention so as not to obscure the disclosure with details that will be readily apparent to those of ordinary skill in the art having the benefit of the description herein.

[0021] Referring now to the drawings figures in which like reference designators refer to like elements. FIG. 1 shows an exemplary motorcycle tricycle (hereafter "trike") with an integrated drum set constructed in accordance with the principles of the present invention and designated generally as trike "10." In particular, trike 10 includes a three wheel trike frame body 12. The body 12 includes a front trike suspension 14 and a rear trike suspension 36. The front trike suspension 14 carries a steerable front wheel 16.

[0022] Other various conventional motorcycle components are included; for example, a front steering mechanism 18, mirrors 20, fuel tank 22; brakes 24; exhaust 38; brake lights 39. The front steering mechanism 18 includes without limitation handle bars, throttle control, and brake levers for initiating tire braking. The instant invention further includes a conventional engine 26 for propelling the trike 10 forward.

[0023] A front seat 28 and a rear seat 30 are provided centrally mounted in an inline configuration. The rear seat 30 includes a back rest 32. The back rest 32 is supported via a back rest support member 34.

[0024] A rear steering mechanism 40 is provided that controls the position of the steerable front wheel 16. The nonconventional rear steering mechanism 40 includes rear handlebar 42 having dual handgrips 44, 46 for gripping. The handgrips 44, 46 includes padding 51 disposed over at least a portion of the handgrips 44, 46 for the comfort of the rider.

One or more rear positioned rear view mirrors **48** coupled with the rear handlebar **42**. One or more brake levers **50** are coupled with the handlebar **42** for engaging one or more front brakes **24** and/or rear brakes (not shown) when pressure is applied by the rider to the brake levers **50**.

[0025] In one embodiment, the rear steering mechanism **40** is hydraulically driven and/or otherwise coupled to the front trike suspension **14** for controlling the front wheel **16**. One or more hydraulic cables **140** secured between the rear steering mechanism **40** and the front trike suspension **14** for turning the front wheel **16**. In yet another embodiment, the rear steering mechanism **40** can be used independently of the conventional front handle bars. In one non-limiting embodiment, a switch (not shown) can be adjusted to switch the control of the front wheel **16** between the front steering mechanism **18** and the rear steering mechanism **40**.

[0026] A right side platform **52** (see FIG. 1) and a left side platform **54** (see FIG. 2) are mounted to the frame body **12**. The right and left side platforms **52**, **54** should be mounted at a height above the ground to provide the necessary clearance to safely ride the trike on roadways.

[0027] As illustrated in FIG. 4, a drum rack assembly **56** is mounted on the right and left side platforms **52**, **54**. The drum rack assembly includes a right t-leg assembly **58** that is mounted with the right side platform **52** and a left t-leg assembly **60** that is mounted with the left side platform **54**. Each of the right and left t-leg assemblies **58**, **60** include a t-leg clamp **62**, **64**. The t-leg assemblies **58**, **60** each include horizontal leg sections **66** and a plurality of feet **68** for stabilization. A right leg **70** and a left leg **72**, each having a first and second end, engage the t-leg assemblies **58**, **60** respectively at one end thereof, as illustrated in FIG. 3. The right and left legs each engage horizontal clamp assemblies **74**, **76** on their opposite ends.

[0028] A horizontal upper bar **78** is configured to maintain a number of boom arms or other members thereof. The horizontal upper bar **78** is provided as a straight bar, however, a curved bar may be implemented without departing from the spirit and scope of the instant invention. The horizontal upper bar **78** is positioned forward from the handlebars to prevent interference during turning, as illustrated in FIG. 1. A right cymbal boom assembly **80** and a left cymbal boom assembly **82** is coupled on their first end to the horizontal upper bar **78** via a cymbal boom clamp assembly **84**, **86**. The cymbal boom clamp assemblies **84**, **86** prevent the cymbal boom assemblies **80**, **82** from sliding about the horizontal upper bar **78** when clampedly engaged. The right and left cymbal boom assemblies **80**, **82** are coupled with a cymbal on their opposite ends, **92**, **94**. While the instant invention shows only one cymbal **92**, **94** coupled with the right and left cymbal boom assemblies, additional crash cymbals, or other types of cymbals, may be coupled with the cymbal boom assemblies **80**, **82** such that two or more cymbals are secured to each cymbal boom assembly **80**, **82**.

[0029] A drum boom **88** is coupled to the horizontal upper bar **78** via a drum boom clamp assembly **90** on a first portion **91** and coupled to a drum **144** on a second portion **93**. Other arms and booms may be secured to the drum rack assembly **56** as desired or required. The horizontal upper bar **78** is fluted, dovetailed or otherwise constructed to prevent the boom assemblies **84**, **86**, **90** from spinning but still allow the boom assemblies **84**, **86**, **90** to slide freely when any of the clamp assemblies **84**, **86**, **90** are in an unlocked position thereof.

[0030] Referring now to FIG. 2, a detailed left side view of the trike **10** is shown. A base drum **96** with an accompanying foot pedal **98** (see FIG. 3 for a same or similar foot pedal **107**) is mounted to the left side platform **54**. The base drum **96** coupled with a bass drum pedal **98** as would be conventionally understood and operated (See FIG. 6). A floor tom **100** is mounted to the left side platform **54**. A floor cymbal **102** is mounted to the left side platform **54** via a floor mount **104**.

[0031] Referring again to FIG. 1, a base drum **106** is mounted to the right side platform **52**. The base drum **106** coupled with a bass drum pedal **108** as would be conventionally understood and operated (see FIG. 6). A floor tom **110** is mounted to the right side platform **52**. A floor cymbal **112** is mounted to the right side platform **52** via a floor mount **114**. A hi-hat cymbal assembly **116** is coupled with the horizontal upper bar **78**. The hi-hat cymbal assembly **116** includes hi-hat cymbals **118** and a hi-hat arm **120**. In one embodiment, the hi-hat arm **120** is coupled via a clamp assembly **122** on an end **124** to the horizontal upper bar **78**. The hi-hat assembly **116** includes a portion **126** that connects with a hi-hat foot pedal assembly **128** for controlling the distance between the hi-hat cymbals **118**.

[0032] Referring again to FIG. 2, a hi-hat cymbal assembly **130** is coupled with the horizontal upper bar **78**. The hi-hat cymbal assembly **130** includes hi-hat cymbals **132** and a hi-hat arm **134**. In one embodiment, the hi-hat arm **134** is coupled via a clamp assembly **136** on an end **124** to the horizontal upper bar **78**. The hi-hat assembly **130** includes a portion **138** that connects with a hi-hat foot pedal assembly (not shown but the same or similar to the foot pedal assembly **128** shown in FIG. 3) for controlling the distance between the hi-hat cymbals **132**.

[0033] Referring now to FIG. 6, a partial perspective view of the front seat of the motorcycle tricycle is shown. A snare drum or other drum **142** is mounted centrally about the trike **10** on or above the gas tank.

[0034] In one embodiment, the drums installed on the motorcycle are mirrored in all aspects, including size and shape, between the right and left sides of the motorcycle tricycle.

[0035] In one nonlimiting embodiment, the motorcycle includes rear motorcycle controls in conjunction with the rear handle bar **42**, the rear motorcycle controls include without limitation a throttle, front brake controls, rear brake controls, clutch, and gear shifter. These rear motorcycle controls are controllable by an operator sitting in the rear seat of the motorcycle. Optionally, the motorcycle includes one or more control mechanism members for allowing simultaneous control of the throttle, front brake controls, rear brake controls, clutch, and gear shifter(s) from two separator motorcycle riders/operators.

[0036] As used herein, when the term "and/or" is used, it shall include all combinations of one or more of the associated described items.

[0037] It will be appreciated by persons skilled in the art that the present invention is not limited to what has been particularly shown and described herein above. In addition, unless mention was made above to the contrary, it should be noted that all of the accompanying drawings are not to scale. A variety of modifications and variations are contemplated in light of the above teachings without departing from the scope and spirit of the invention. It will be readily apparent that various changes may be made thereto without departing

from the spirit and scope of the disclosure or sacrificing all of its material advantages. The examples and embodiments described herein are merely exemplary of the instant disclosure.

What is claimed is:

1. An at least two wheeled motorcycle comprising: a motorcycle frame; a front seat and a rear seat centrally mounted inline about said motorcycle frame; and a rear steering mechanism having a rear handlebar positioned behind said front seat, said rear steering mechanism capable of controlling a front wheel.
2. The at least two wheeled motorcycle of claim 1 further comprising at least one rear positioned rear view mirrors disposed about said rear handlebar.
3. The at least two wheeled motorcycle of claim 1, further comprising a front wheel coupled with a forward suspension disposed about said motorcycle frame, wherein said rear steering mechanism is hydraulically coupling said front wheel.
4. The at least two wheeled motorcycle of claim 1, further comprising a front handle bar capable of controlling a front wheel controllable independent of said rear handlebar.
5. The at least two wheeled motorcycle of claim 3 further comprising at least one hydraulic cable interposed between said forward suspension and said rear handlebar.
6. The at least two wheeled motorcycle of claim 4 further comprising an adjustable control for switching control of steering between a front handle bar disposed about said motorcycle frame and said rear handlebar.
7. The at least two wheeled motorcycle of claim 1 wherein said at least two wheeled motorcycle is a trike having a centrally mounted front wheel and two laterally displaced rear wheels.

8. The at least two wheeled motorcycle of claim 7 further comprising a left and right platform on a left and right side of said motorcycle frame.

9. An at least two wheeled motorcycle comprising:

- a motorcycle frame;
- a front steering column with a front wheel and a front handle bar for steering, said front steering column rotatably secured about said frame;
- a front seat and a rear seat centrally mounted inline about said motorcycle frame, said rear seat including a back rest; and
- a rear steering mechanism having a rear handlebar positioned behind said front seat, said rear steering mechanism capable of controlling a front wheel independent of said front handle bar.

10. The at least two wheeled motorcycle of claim 9 further comprising at least one rear brake lever, said at least one rear brake lever capable of applying brakes to at least one of said front wheel and a back wheel.

11. The at least two wheeled motorcycle of claim 9 further comprising at least one rear clutch member capable of disengaging a clutch of the at least two wheeled motorcycle.

12. The at least two wheeled motorcycle of claim 9 further comprising at least one rear brake lever, said at least one rear hand brake lever capable of applying brakes to at least one of said front wheel and a back wheel.

13. The at least two wheeled motorcycle of claim 9 further comprising at least one rear foot brake lever, said at least one rear foot brake lever capable of applying brakes to at least one of said front wheel and a back wheel.

* * * * *